

# Deep Dive the New Catalyst 6840-X



**Prasad Velamuri:** Product Management, Platform Switching  
**Bart Peluso :** Cisco Enterprise Solutions Marketing

September 1, 2015



# Our Speakers



**Bart Peluso**

Product Solutions Marketing  
Cisco



**Prasad Velamuri**

Product Management, Platform Switching  
Cisco

# Agenda

Switch Market Update

Catalyst Backbone Update

Catalyst 6840-X

Catalyst 6800 Roadmap

Summary & Resources



# Switch Market Update

# Digital Transformation of Business

Requires Network Expansion to Increase Scale & Launch New Services



Workforce  
Experience



Customer  
Experience



Infrastructure  
Solutions



Business  
Operations



Operational  
Technology



Security &  
Compliance

# Digital Transformation is Challenging

IP Display/DMS



Printer



IP Camera



LED Lights



AP



PC/Laptop



IP Phone



How do you support new **PoE devices** efficiently?

How do you make it easy to **provision & scale**?

How do you **reduce wiring & cable costs**?

How do you ensure secure **network access**?

How do you adapt to new **connectivity requirements**?

# Catalyst Innovations from Access to Backbone



New Switches for  
Workspaces, Hospitality,  
Retail & More

New Catalyst 3560-CX &  
2960-CX Compact Switches

**Simple:**

Easy to use with flexible  
deployment models



New Multigigabit Switches  
for 802.11ac Wave 2

New 4500E, 3850 & 3560-CX  
Switches

**Smart:**

To prepare you for  
new technologies



Doubling the 10G Density with  
Uncompromised Services &  
Security for Faster Backbone

New line cards Catalyst 6800

**Secure:**

your existing backbone  
investments into the future

# Catalyst Backbone Update



# Catalyst 6800 Series Leads the Industry

6807-XL



**Next Generation**  
Campus Backbone  
Portfolio

6880-X



**Architectural Solution**  
Leverage Aggressive  
Services & Bundle Pricing

6840-X



6800 IA



**Nonstop Innovation**  
Strong Hardware &  
Software Roadmap

# Catalyst 6000 Series is Here to Stay

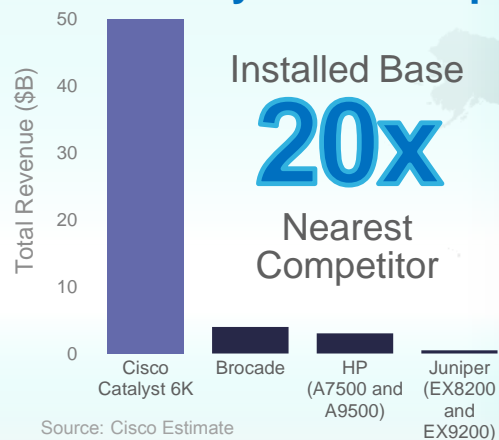
## The Momentum Continues

Catalyst 6000 & the Competition

Catalyst 6000 is Everywhere

Catalyst 6800 Momentum

### Cisco Catalyst 6000 Series Industry Leadership



**800,000+**  
Chassis Shipped

**110 Million+**  
Ports Shipped

**45,000+**  
Cisco Catalyst  
6500 Customers Worldwide

**7,500+ Unique**  
6800 Customers Worldwide  
and Counting!

**700+ Unique**  
Instant Access Deployment!

# Catalyst Backbone Portfolio

## FIXED

## MODULAR(\*)

Features

### Catalyst 3850 1G Fiber



12/24p 1G  
1RU Aggregation

### Catalyst 3850 10G Fiber

12p/24p/48p 10G  
1RU Aggregation

FCS  
Q215

### Catalyst 4500-X



16p/32p 1 RU  
10GE Aggregation

### Catalyst 6880-X



Up to 80 10G Ports  
5 RU Core

### Catalyst C6840-X



Up to 40 10G Ports  
2RU, NG  
Backbone

### Catalyst 6807-XL/6500-E

- Comprehensive
- Borderless Feature Set
- Highest Performance and Scalability
- Lower TCO

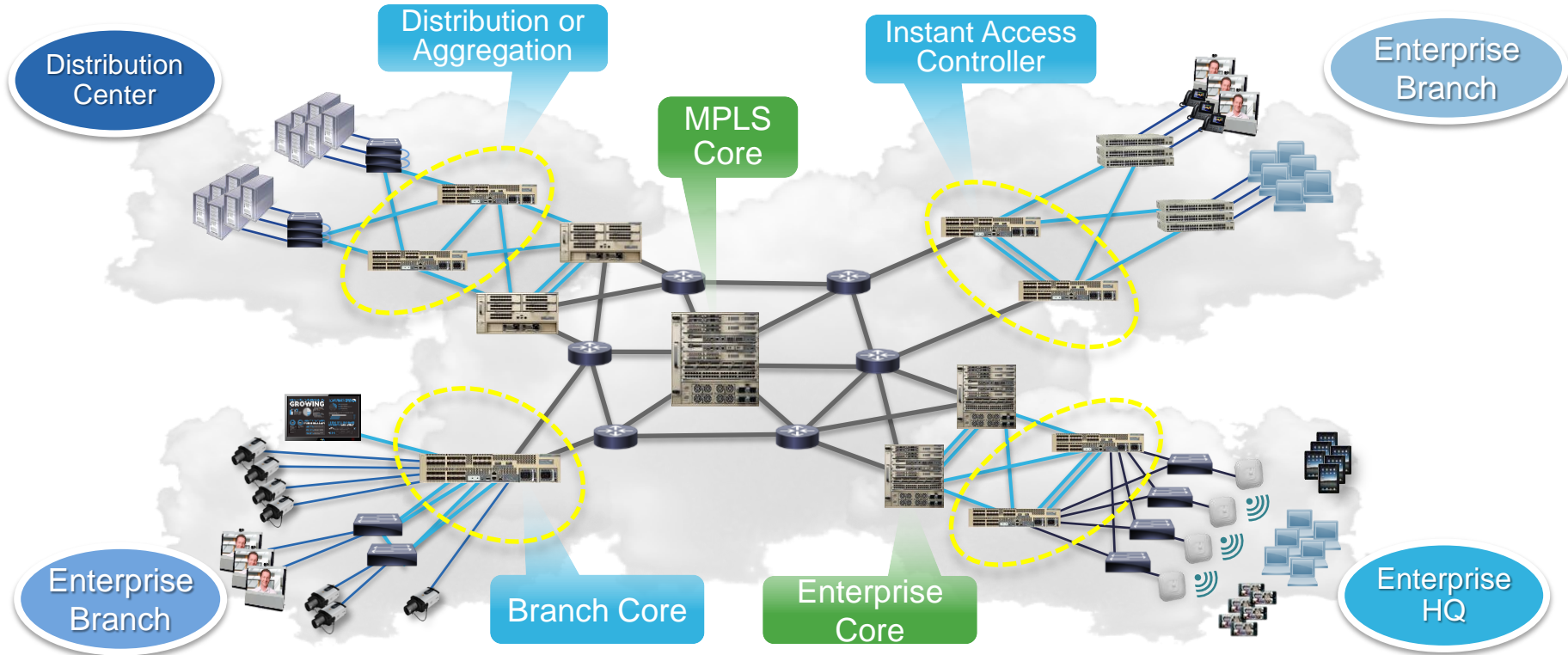


Industry-Leading Campus  
Backbone Platform

Scale

# Building Comprehensive Campus Networks

## Catalyst 6800 Flexible Core & Distribution Options



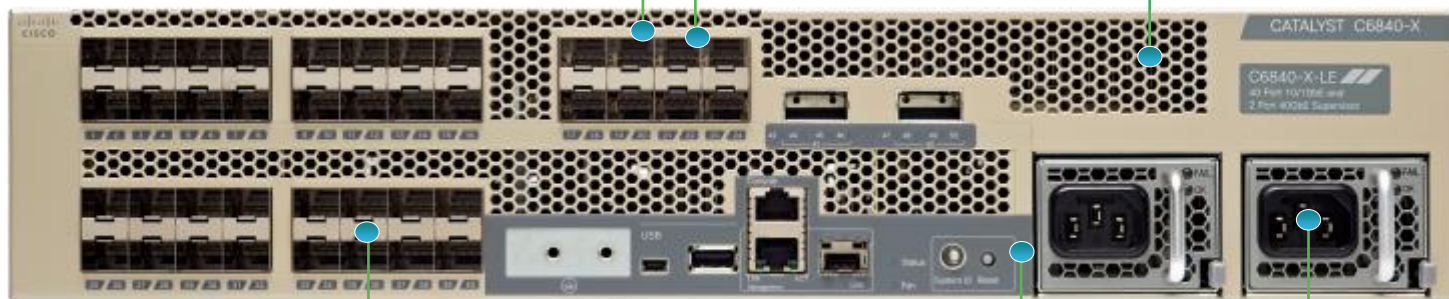
# Catalyst 6840-X

# Introducing Catalyst 6840-X

**Up to 40 ports** of SFP+,  
up to 12 ports of QSFP  
10/100/1000M GLC-T  
1G SFP, 100M FX

**256K IPV4 Route**  
**1.5M Netflow**

**Up to 2 x 40G QSFP Uplinks**  
Breakout to 4 x 10G  
SFP/SFP+



**Height:**  
2RU  
**Depth:**  
21.8"

## 4 Key Variants

High scale control  
plane with x86 CPU

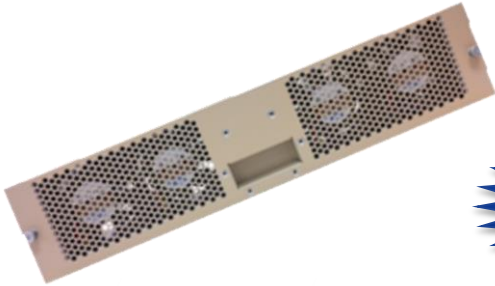
Instant Access,  
SGT, MACSec

750W/1100W  
Redundant AC/DC  
**Front-to-Back Airflow**

All Catalyst 6K Features with no Compromise in a Smaller Form Factor

# Catalyst 6840-X

## Environmental Overview



High Efficiency  
**4500 RPM**  
Redundant Fans



Platinum Efficient  
**750 / 1100W**  
Power Supplies



**Height**  
3.5 in (2RU)

**Width**  
17.35 in

**Depth**  
21.8 in

# 6840-X SKUs & Suggested NTE

16x10G

32x10G

24x10G + 2x40G

40x10G + 2x40G

Common  
ASIC  
Architecture



Native Optics: SFP/SFP+

SFP/SFP+

SFP/SFP+ and QSFP

SFP/SFP+ and QSFP

# of 10G  
Ports:

16

32

24 + 8 using breakout

40 + 8 using breakout

# of 40G  
Ports:

4 using reverse adapter

8 using reverse adapter

2 + 6 using reverse  
adapter2 + 10 using reverse  
adapter

Features:  
Full-feature L2/L3 with  
MPLS, VPLS. IPv4/IPv6  
capabilities, 512K Netflow

Full-feature L2/L3 with  
MPLS, VPLS. IPv4/IPv6  
capabilities, 1M Netflow

Full-feature L2/L3 with  
MPLS, VPLS. IPv4/IPv6  
capabilities, 1M Netflow

Full-feature L2/L3 with  
MPLS, VPLS. IPv4/IPv6  
capabilities, 1.5M Netflow

Additional  
Hardware  
Features:  
Large Buffers, SGT,  
MACSec, LISP, Dual Priority  
Queues, Two Level Shaping,  
Instant Access

Large Buffers, SGT,  
MACSec, LISP, Dual Priority  
Queues, Two Level  
Shaping, Instant Access

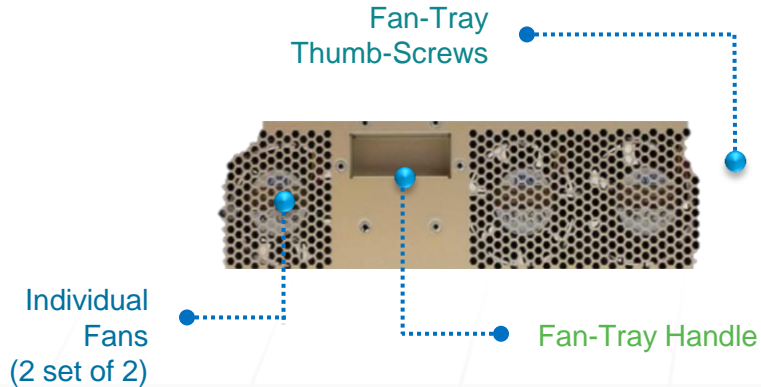
Large Buffers, SGT,  
MACSec, LISP, Dual  
Priority Queues, Two  
Level Shaping, Instant  
Access

Large Buffers, SGT,  
MACSec, LISP, Dual  
Priority Queues, Two  
Level Shaping, Instant  
Access



# Catalyst 6840-X

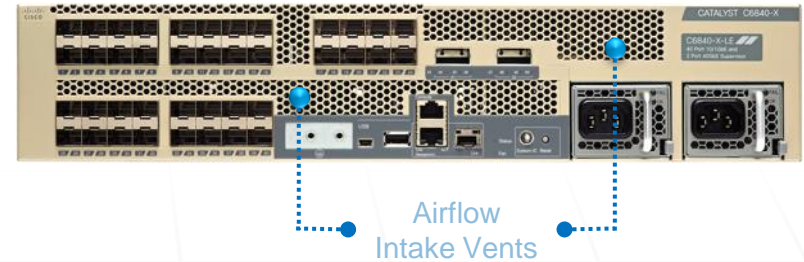
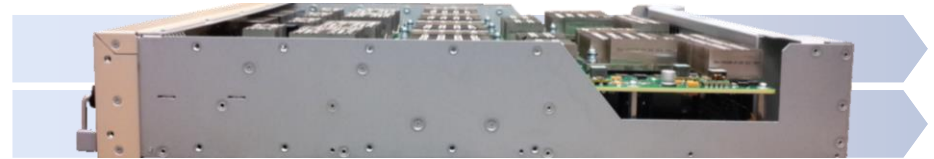
## Fan Redundancy & Air Flow





### Fan-Tray Highlights:

- Has 4 variable-speed High-Efficiency Fans (**200 CFM**)
- Supports 4 speeds between 3000 & 4500 RPM per Fan
- Capable of cooling of ALL 4 C6804-X chassis models
- Can still operate with up to 2 individual Fan failures
- Supports Fan-Tray “OIR” for minimum of 120 seconds

### Air Flow: Front to Back



LED	Color	Status	Description
FAN		Solid	Fan-Tray OK
FAN		Solid	Fan-Tray Fault

# Catalyst 6840-X

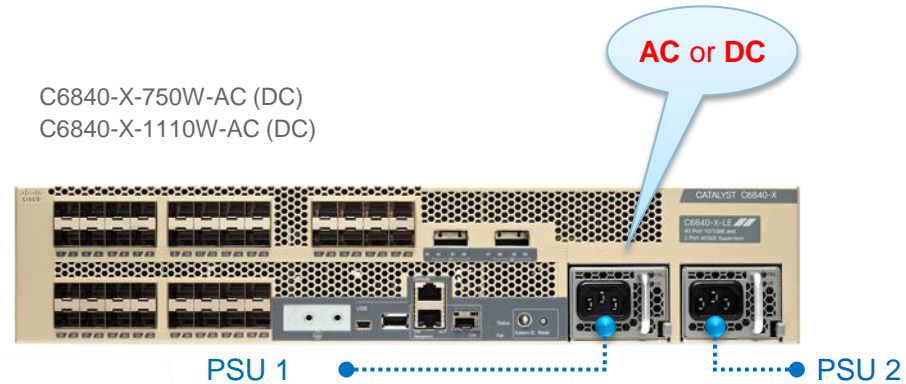
## PSU Redundancy & Inputs



### Power Supply Highlights:

- Two AC or DC models @ 110V: **750W** or **1100W**
- Up to 92% Power Efficiency @ 100% of load
- Power Hold-Up Time is ~20 msec @ 100% load
- “Front to Back” Variable-Speed Cooling Fans
- Supports **Combined** or **Redundant (1:1)** mode

C6840-X-750W-AC (DC)  
C6840-X-1110W-AC (DC)



LED	Color	Status	Description
IN	Green	Solid	Input OK
IN	Green	Blinking	Under-Current
OUT	Green	Solid	Output OK
OUT	Green	Blinking	Over-Current
Fault	Red	Solid	Malfunction

# Power Supply Redundancy

Catalyst 6840-X

The Catalyst 6840-X Utilizes **Two** Power Supplies in Either **Redundant** or **Combined** Mode

## Redundant Mode



PSU 1

PSU 2

**Recommended (Default)**

## Combined Mode



PSU 1

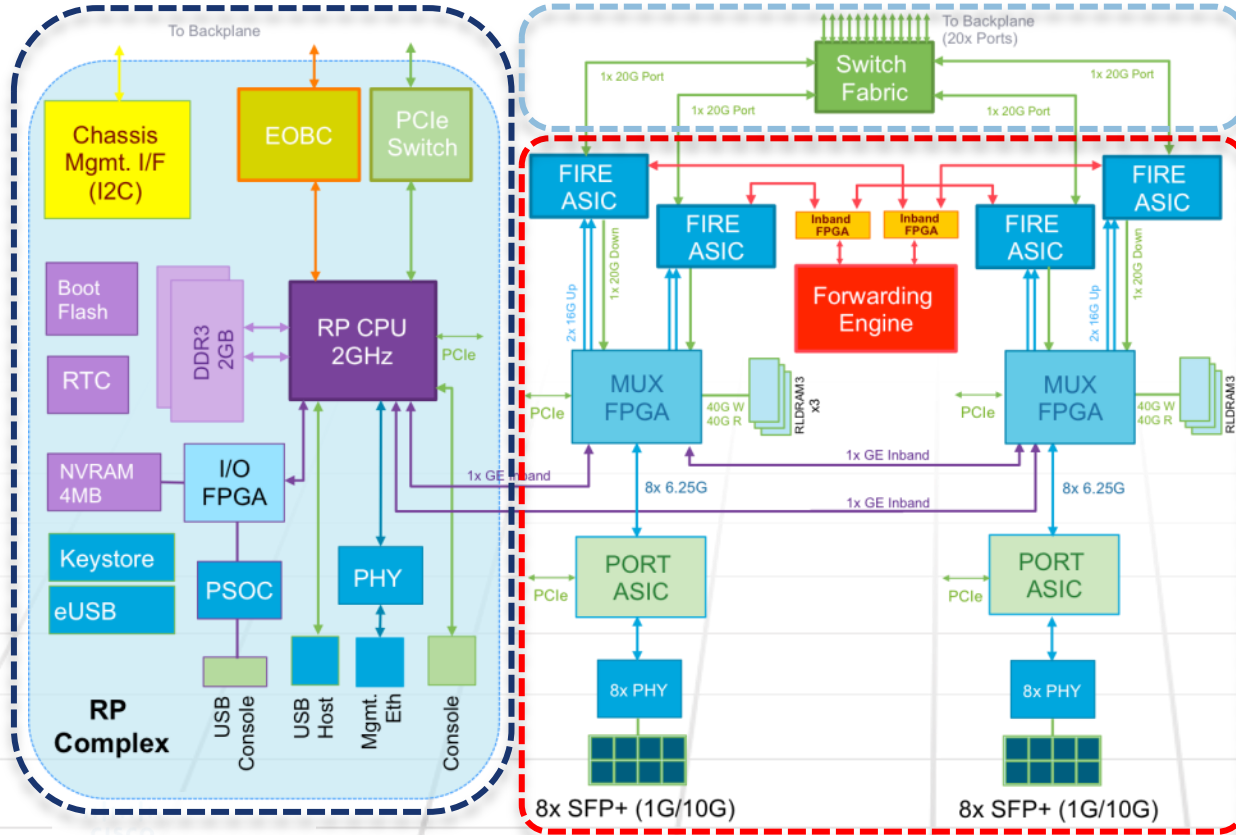
PSU 2

- Each PSU provides up to 90% of its capacity
- Total power available is 180% of a single supply
- A single PSU may not have power for the system
- This mode is **NOT Recommended**

# Catalyst 6840-X:

Fixed Chassis Design

NEW



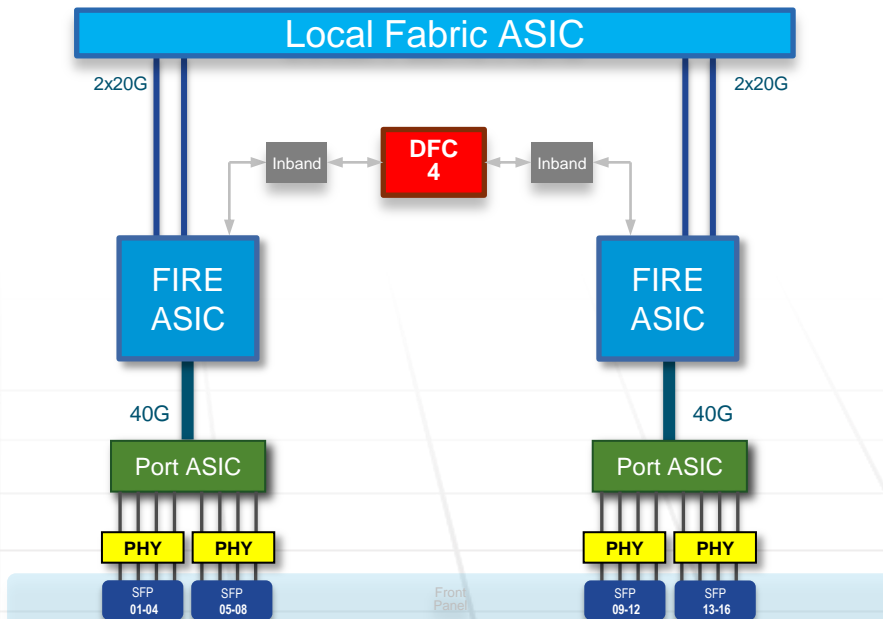
## 3 Main Components:

- RP Complex
- Baseboard
- Switch Fabric

# C6816-X-LE

## Architecture Overview

Feature	C6816-X-LE
Forwarding ASIC(s)	1 DFC4-E
Bandwidth	80 Gbps
Throughput	60 Mpps
CPU	2.0GHz IB2C
Memory	4GB DDR3
Buffer (MB) per Port	250 or 500MB (2GB / 8 or 4p)
IPv4 Routes	256K
IPv6 Routes	128K
MAC Address	128K
Flexible NetFlow	512K
QoS & ACL	64K
Internal Flash	2GB eUSB+
Console	RJ45 / USB Type B
Management	RJ45 / SFP
External Flash	USB Type A



# C6816-X-LE

## CLI Outputs



### C6816-X-LE# show module

Mod	Ports	Card Type	Model	Serial No.
1	20	6816-X-LE 16P SFP+ Multi-Rate (Active)	<b>C6816-X-LE</b>	FDO190204L3

Mod	MAC addresses	Hw	Fw	Sw	Status
1	7c0e.cec1.f21c to 7c0e.cec1.f274	0.202	15.1(03)	15.2(2)ID101	Ok

Mod	Sub-Module	Model	Serial	Hw	Status
1	Policy Feature Card 4	<b>C6840-X-LE-PFC</b>	FDO190204L3	1.202	Ok

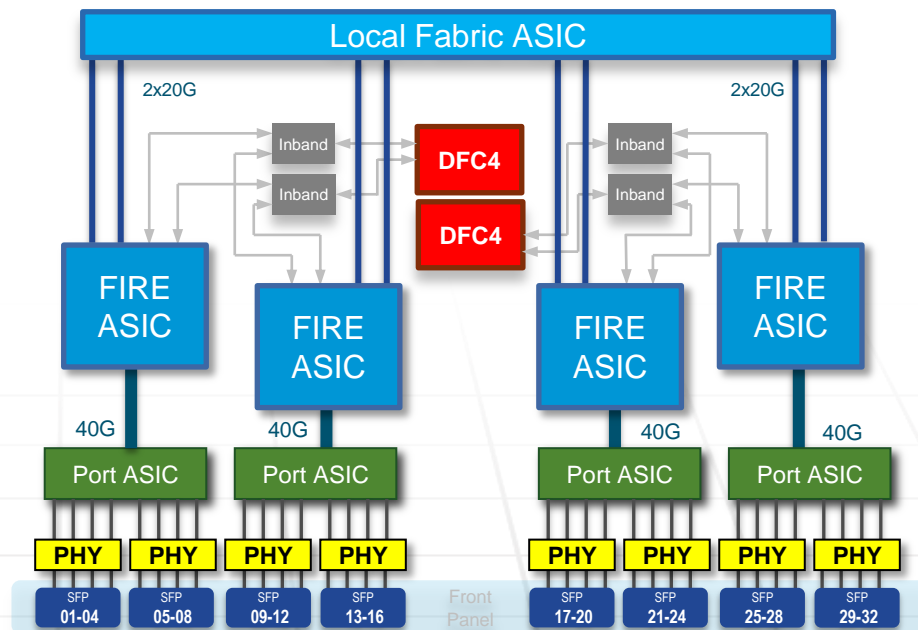
Mod Online Diag Status

1 Pass  
C6816-X-LE#

# C6832-X-LE

## Architecture Overview

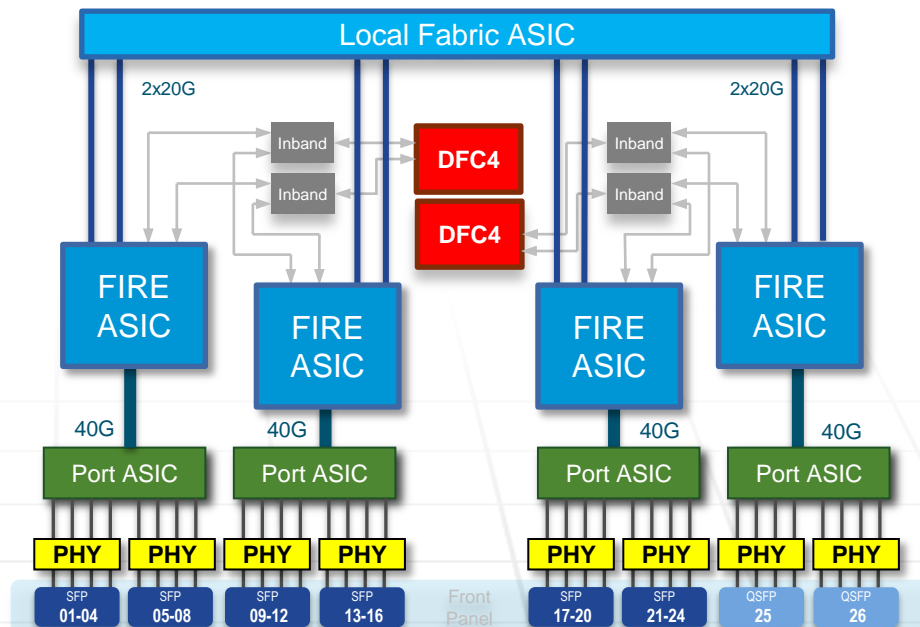
Feature	C6832-X-LE
Forwarding ASIC(s)	2 DFC4-E
Bandwidth	160 Gbps
Throughput	120 Mpps
CPU	2.0GHz IB2C
Memory	4GB DDR3
Buffer (MB) per Port	250 or 500MB (2GB / 8 or 4p)
IPv4 Routes	256K
IPv6 Routes	128K
MAC Address	128K
Flexible NetFlow	1M
QoS & ACL	64K
Internal Flash	2GB eUSB+
Console	RJ45 / USB Type B
Management	RJ45 / SFP
External Flash	USB Type A



# C6824-X-LE-40G

## Architecture Overview

Feature	C6824-X-LE-40G
Forwarding ASIC(s)	2 DFC4-E
Bandwidth	160 Gbps
Throughput	120 Mpps
CPU	2.0GHz IB2C
Memory	4GB DDR3
Buffer (MB) per Port	250 or 500MB (2GB / 8 or 4p)
IPv4 Routes	256K
IPv6 Routes	128K
MAC Address	128K
Flexible NetFlow	1M
QoS & ACL	64K
Internal Flash	2GB eUSB+
Console	RJ45 / USB Type B
Management	RJ45
External Flash	USB Type A

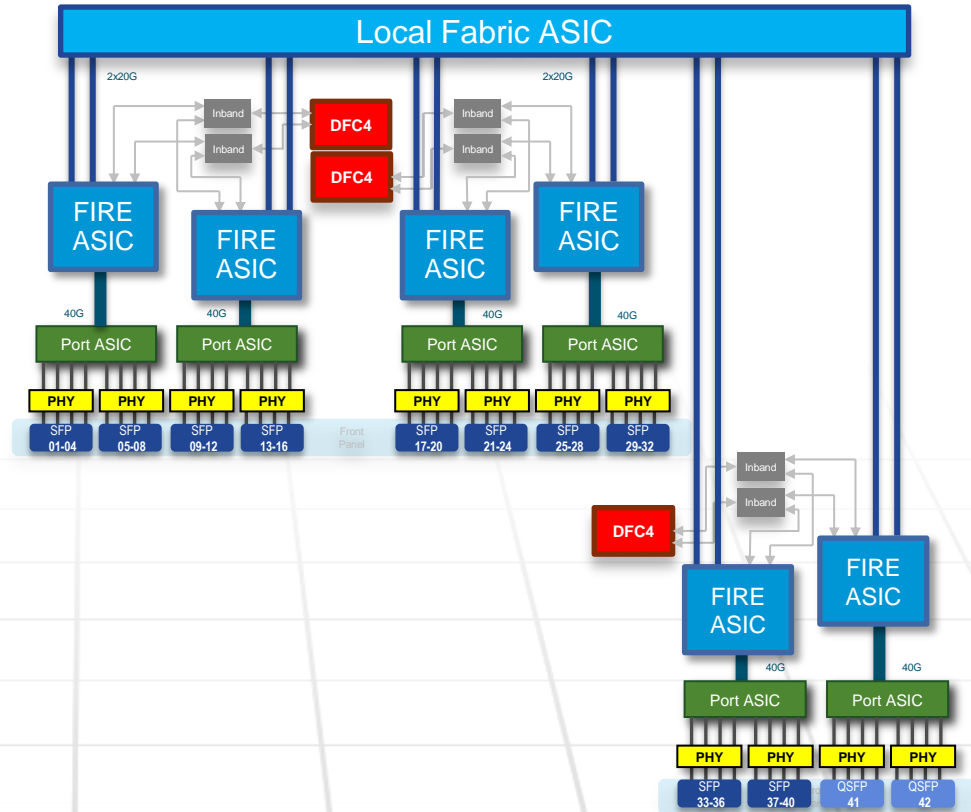




# C6840-X-LE-40G

## Architecture Overview

Feature	C6840-X-LE-40G
Forwarding ASIC(s)	3 DFC4-E
Bandwidth	240 Gbps
Throughput	180 Mpps
CPU	2.0GHz IB2C
Memory	4GB DDR3
Buffer (MB) per Port	250 or 500MB (2GB / 8 or 4p)
IPv4 Routes	256K
IPv6 Routes	128K
MAC Address	128K
Flexible NetFlow	1.5M
QoS & ACL	64K
Internal Flash	2GB eUSB+
Console	RJ45 / USB Type B
Management	RJ45 / SFP
External Flash	USB Type A



# Summary & Resources

# Summary

## Digital Transformation of Business

- Requires Network Expansion for Scale & Services

## Digital Transformation is Challenging

- Cisco is Innovating from Access to Backbone

## Catalyst 6000 Series Leads the Industry

- Install Base is 20x Nearest Competitor

## Introducing Catalyst 6840-X with 4 Key Variants

- C6816-X-LE
- C6832-X-LE
- C6824-X-LE-40G
- C6840-X-LE-40G

## Supervisor 6T

- New Level of Scalability & Performance



# Resources

- Catalyst 6800 Data Sheets & Literature:
- Catalyst 6800 FAQ:
- Catalyst 6800 Video:
- Lippis Report:

The screenshot shows the Cisco Catalyst 6800 Series product page. The navigation menu on the left includes sections like 'Navigation', 'My Links', and 'Resources'. The main content area features a large image of the Catalyst 6807-XL switch with the text: 'Catalyst 6807-XL Future-proof backbone platform to scale your campus services with NO compromise'. Below this, there are tabs for 'Catalyst 6807-XL', 'Catalyst 6880-X', and 'Catalyst 6800IA'. The 'Catalyst 6800 Product Announcements' section lists two announcements: 'Monday, June 24th, 2013: Cisco Refreshes Its Enterprise Networking Franchise to Empower Business and IT Innovation' and 'Monday, June 10th, 2013: EN Internal Game Changer Launch - Americas'. The 'Featured Videos' section includes a video titled 'The Catalyst 6800 Switch Series'. Two items are highlighted with orange boxes: 'Catalyst 4500-X Series' in the navigation menu and 'Cisco is introducing the Catalyst 6800 series' in the announcements section.

<http://wwwin.cisco.com/tech/products/6800>

# Get Started with the 6840-X

## Schedule an Backbone Assessment

Contact your Cisco rep to bring experts on-site for a consultation

## Interact with Colleagues

[https://communities.cisco.com/community/technology/enterprise\\_networks](https://communities.cisco.com/community/technology/enterprise_networks)

## Learn More at:

[www.cisco.com/tech/products/6800](http://www.cisco.com/tech/products/6800);

Questions?



**CISCO**

*TOMORROW starts here.*