

Secure Network Mobility for Emergency Voice and Data Communications



> **MODULAR DESIGN OPTIMIZES CAPABILITIES TO SUITE THE NEEDS OF YOUR MISSION**

The C-1000 series features interoperable modules that work together or individually. The complete suite of modules consists of ten modules with different capabilities for total command center and network portability in an office, hotel, or at the edge of the mission.

> **POWER, CONTROL AND CONNECTIVITY**

All C-1000 modules have a small form factor and are stackable for a limited footprint. The routers and optimizers proactively and seamlessly switch WAN links, enterprise connection points, and transmission modes for users. Your data is transferred without interruptions. All modules are custom configurable, and administrators them from a remote point through a variety of mediums.

Aerospace

Broadcast

Government

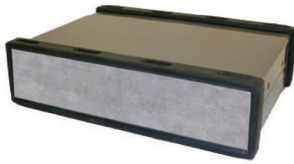
Infrastructure



C-1100 - POWER MANAGEMENT UNIT

- > Accepts DC power from almost any source, including wind and solar
- > Provides UPS, NOMAD module power mgmt and "hot-swappable" batteries
- > Supports 2/4 battery expansion

- > 3.03 kg/6.7 lbs.
- > 0° to 40°C / 32° to 104°F (internal batteries)
- > (2) USB charging ports
- > (2) 15VDC power output ports



C-1150 - BATTERY EXPANSION UNIT

- > Connects to Power module
- > Provides (2) extra batteries for increased run time
- > "Hot-swappable" batteries

- > Storage for (2) spare batteries
- > 2.17 kg/4.8 lbs.
- > (2) 89 Whr batteries
- > (2) Spare 89 Whr batteries



C-1200 - NETWORK ROUTER/SWITCH MODULE WITH RF

- > Cisco® 5915 high performance router
- > 3G/4G WAN and dual Wi-Fi WAN/LAN
- > Optimization Software
- > Automated WAN failover
- > Automated use of up to 16 gateways

- > 2.58 kg/5.7 lbs.
- > 0° to 55°C / 32° to 131°F
- > (1) Layer-3 routed WAN port
- > (3) Layer-2 LAN ports
- > (2) USB power ports



C-1300 - NETWORK ROUTER/SWITCH MODULE

- > Cisco® 5915 high performance router
- > Cisco® ESS 2020 provides fully-managed WAN/LAN switch capabilities
- > Optimization Software
- > Automated WAN failover
- > Automated use of up to 16 gateways

- > 2.22 kg/4.9 lbs.
- > -20° to 53°C / -4° to 127°F
- > (2) Layer-3 routed WAN ports
- > Up to (10) manageable LAN ports with (2) or (4) PoE+ ports
- > (2) USB power ports



C-1426 - 26-PORT SWITCH MODULE

- > Cisco® ESS 2020 provides fully-managed LAN switch capabilities
- > Includes (4) PoE+ on (4) switch ports
- > Scalable to support 100+ users

- > 1.85 kg/4.1 lbs.
- > -40° to 60°C / -40° to 140°F
- > (2) Gigabit Ethernet LAN ports
- > (24) 10/100 Ethernet LAN ports with (4) PoE+ ports
- > (2) USB power ports



C-1500 - SERVER MODULE

- > Small-scale mobile data center
- > Access network storage on the fly
- > Access cloud applications
- > Work with thin or zero client devices in a virtual desktop infrastructure (VDI)
- > Deliver Mobile Device Mgmt. (MDM) protocols with BYOD software

- > 2.67 kg/5.9 lbs.
- > Intel® Dual Core i5 or Quad Core i7 w/Intel® QM87 series chipset PCH
- > 4,8, or 16 GB RAM at 1600 MHz
- > Up to (4) SATA SSDs; with (1) or (2) removable SSDs
- > (2) Gigabit Ethernet NICs